

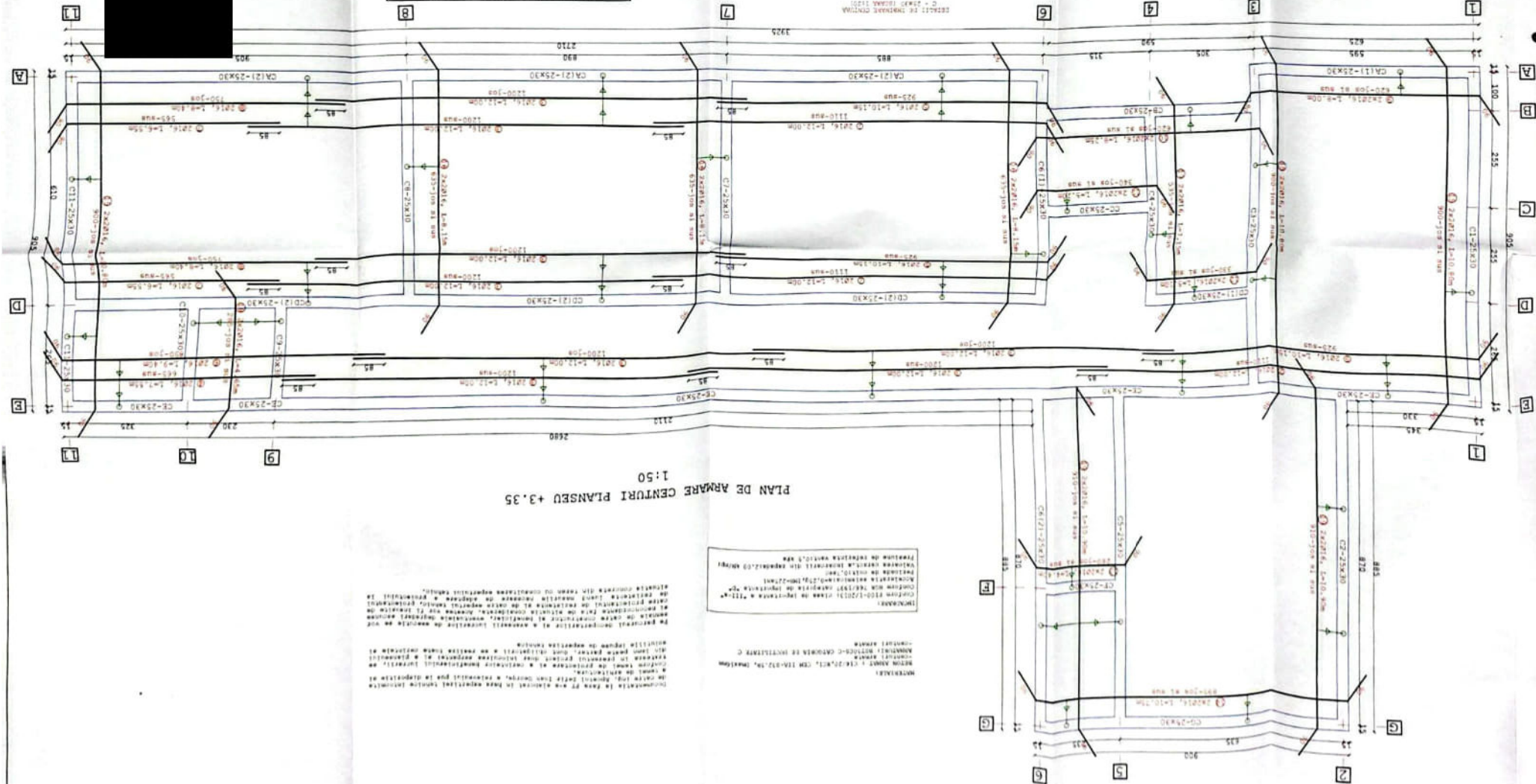
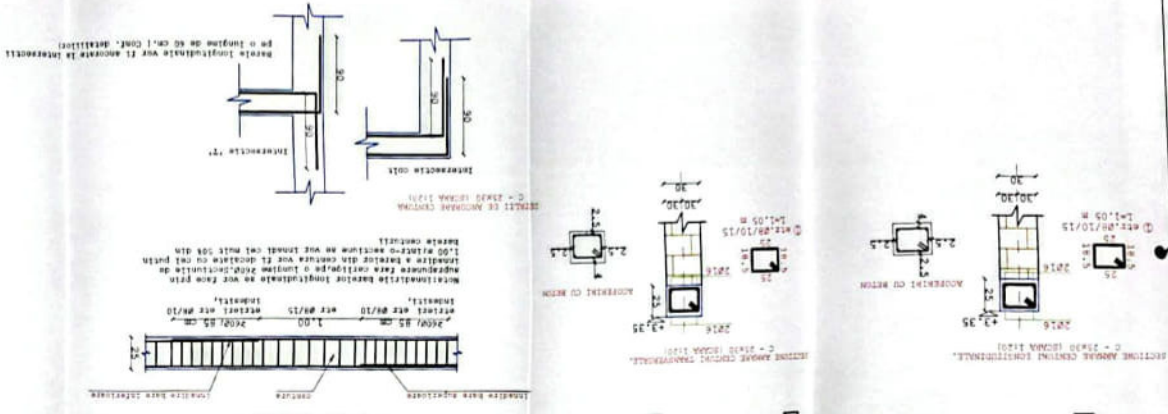
MATERIALE:
BETON ARMÉ : C16/20, XC1, CEM IIA-32,5N, DRA:6mm
ARMATURES: BÉTONOS-C CATEGORIA DE SOLICITAÇÃO C
-CONCRETO ARMADO

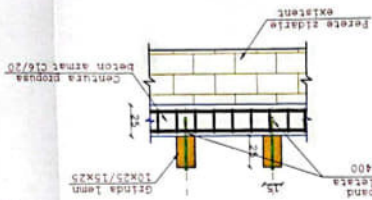
[illegible][illegible][illegible]

Scanat cu CamScanner

[illegible]

EXTRAS DE CÁLCULO CENTRUM PIRETI +35		B515005, 16 de	
Materia	φ (mm)	Net height	1470,00
1	2	12,00	12,00
2	2	12,00	1400
3	4	12,00	16
4	4	7,55	2
5	5	10,15	6
6	6	9,40	2
7	8	6,55	4
8	8	4,40	4
9	10	4,80	4
10	10	8,25	4
11	11	5,20	4
12	13	5,10	4
13	13	4,40	4
14	15	10,75	4
15	15	10,80	12
16	16	8,15	4
17	16	7,15	4
18	16	10,90	12
Longitudinal center (mm)		1470,00	1
Curvature radius (mm)		0,985	1,575
1595		585	1





DETALIS ANCORAJ GINIZI TENN

[illegible]